

How To Use [BMW ICOM](#) Software

Dell E6420 Laptop Configuration:

CPU: Intel i5

RAM: Minimum 4GB DDR3

Important Notice: Remember to do following 2 settings for Dell E6420:

Do not insert the ICOM Software HD, turn on laptop, then press and hold F12 button to enter BIOS system, change BIOS Date/Time and HDD mode.

1. Setting - Date/Time, set to current date
2. Setting -System Config->SATA Operation->ATA
3. Save the change and exit.

How to Use [BMW ICOM](#) Software:

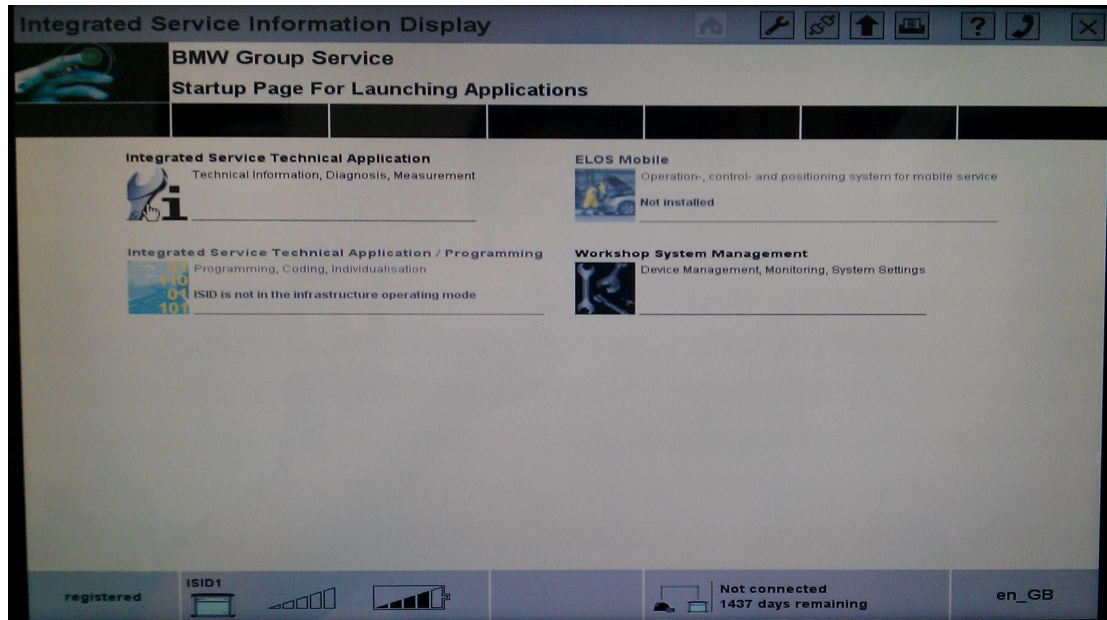
Step 01: Insert the USB Dongle onto laptop:



Step 02: Insert ICOM Software HD onto laptop. Turn on laptop, it will enter ICOM Software automatically and give you ISID and ISSS options.

Step 03: Choose your desired one and wait for a while, you will see the ISID or ISSS software interface:

ISID:



ISSS:

